

1

attach bracket

Attach custom reusable non-sterile bracket to transducer by aligning locating features.



2

cover up

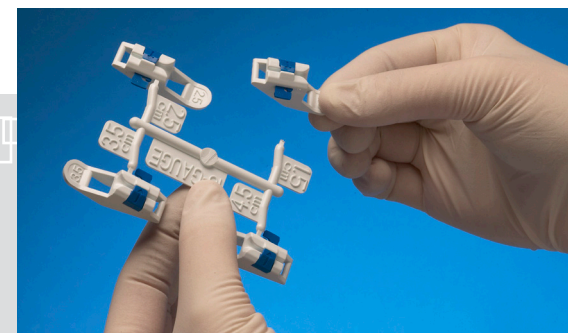
CIVCO makes it easier to reduce infection rates and cross-contamination with a telescopically-folded CIV-Flex™ cover. Expand your sterile field to 58" by covering the transducer and cord with the sterile latex-free cover.



3

depth selection

Easy-to-identify color coded needle guides are available in 18, 21 and 22 gauge. Following assessment of the patient, select appropriate depth to access target.



safe. efficient. guiding patient care.

Five steps for clinical confidence in central line placement and nerve blocks.



SonoSite L25 Needle Guide

Ref. #	Product Description	Qty.
Needle Guide Starter Kits - Reusable transducer bracket and sterile procedure kits.		
674-037	Non-sterile L25 single-angle bracket with needle guide (1.5cm, 2.5cm, 3.5cm, 4.5cm) and 10.2 x 147cm (4" x 58") telescopically-folded CIV-Flex cover (5) 18 gauge (Blue)	1
674-038	Non-sterile L25 single-angle bracket with needle guide (1cm, 1.5cm, 2cm) and 10.2 x 147cm (4" x 58") telescopically-folded CIV-Flex cover (5) 21 gauge (Teal)	1
674-039	Non-sterile L25 single-angle bracket with needle guide (1cm, 1.5cm, 2cm) and 10.2 x 147cm (4" x 58") telescopically-folded CIV-Flex cover (5) 22 gauge (Black)	1
Needle Guide Replacement Kits		
P09072-01	Sterile needle guide (1.5cm, 2.5cm, 3.5cm, 4.5cm) and 10.2 x 147cm (4" x 58") telescopically-folded CIV-Flex cover, gel and bands. 18 gauge (Blue)	24
P09073-01	Sterile needle guide (1cm, 1.5cm, 2cm depths) with 10.2 x 147cm (4" x 58") telescopically-folded CIV-Flex cover, gel and bands. 21 gauge only (Teal)	24
P09074-01	Sterile needle guide (1cm, 1.5cm, 2cm depths) with 10.2 x 147cm (4" x 58") telescopically-folded CIV-Flex cover, gel and bands. 22 gauge only (Black)	24
Transducer Covers		
610-1000	Sterile 10.2 x 147cm (4" x 58") CIV-Flex cover	24
610-989	Sterile 15.2 x 147cm (6" x 58") telescopically-folded polyethylene cover	24

attach guide

Using proper sterile technique, snap needle guide onto bracket in a single click.

4



5

quick-release

Slide tab on needle guide to activate quick-release. Remove needle from transducer assembly.



For additional information call 319.656.4447 or visit WWW.CIVCO.COM.

Providing Clinical Confidence for Line Placement & Nerve Blocks.

Safe. Efficient. Guiding Patient Care.

Achieve faster, more accurate needle placement.

Studies show the use of real-time ultrasound guidance improves first time success rates and decreases complication rates associated with line placement and other types of procedures.^{1,2} For clinicians that means greater efficiency during the procedure resulting in a higher throughput of patients. With the use of needle guidance there is greater confidence in finding the targeted area quickly, allowing users to focus on the patient.



Improve patient care while minimizing hospital risk.

Quality-of-care issues are associated with any needle insertion. Hospitals are now able to minimize associated risks of accidental puncture through improved visualization and increasing successful needle insertion rates. Improved first time success rates may lead to less patient anxiety and discomfort, providing overall improvement in the patient experience. For clinicians, first time success rates help raise confidence levels in needle placement while also improving patient safety.

Needle Guide Features:

- Single-use design reduces risks of cross-contamination
- Snaps onto bracket with single click- no additional assembly required
- Colored side tab allows for simple quick-release function

Transducer Cover Features:

- Improves infection control rates by preventing cross-contamination at minimal cost per procedure
- Longest length cover on market for complete sterile coverage of ultrasound transducer and cord
- Telescopically-folded for easy single-person application to equipment
- Latex-free kit includes sterile gel and bands

1 - "Improved care and reduced costs for patients requiring peripherally inserted central catheters: the role of bedside ultrasound and a dedicated team." JPEN: Journal of Enteral Nutrition, September/October 2005, p.1.
2 - Moureau, Nancy, CRNI, BSN. "Using Ultrasound to Guide PICC Insertion." Nursing, December 2003, p. 1.

Providing Clinical Confidence for Line Placement & Nerve Blocks.



Placing an Order

Contact a CIVCO customer service specialist to place an order or request a product sample.
For international distribution, visit CIVCO Worldwide at WWW.CIVCO.COM.

Toll-free within the U.S. and Canada: 800.445.6741

Toll-free Facsimile: 877.329.2482

Direct Dial: 319.656.4447

Facsimile: 319.656.4451

E-mail: info@civco.com

WWW.CIVCO.COM



Providing Clinical Confidence for Line Placement & Nerve Blocks.



COPYRIGHT © 2010, CIVCO IS A REGISTERED TRADEMARK OF CIVCO MEDICAL SOLUTIONS. CIV-FLEX IS A TRADEMARK OF CIVCO. PATENTS PENDING. CIVCO PRODUCT NAMES MAY BE COVERED BY THE FOLLOWING U.S. PATENT NO. 7,588,541. ALL PRODUCTS MAY NOT BE LICENSED IN ACCORDANCE WITH CANADIAN LAW. PRINTED IN USA. 2009R-2417 REV. 1